

PURE SNATCHER

CHLORINE & SEDIMENT FILTER INSTRUCTIONS

Step 1: Verify all parts are accounted for. See parts below.

Step 2: Connect the unit to a water source. Use the hose spigot adapter from the parts bag to fasten to a standard water spigot. Using the Quick Connect feature install one end of the tubing into the Quick Connect on the spigot adapter and the other end of the tubing into the sytem Input Quick Connect to the left of the sediment filter. This will carry water from the spigot into the filter. See the diagram below for a visual aid.

Step 3: Using the Quick Connect on the block carbon filter output of the system attach a piece of tubing that goes from there to your reservoir where the de-chlorinated water is to be stored for use. See the diagram below for a visual aid.

TIPS:

For first use or anytime you change a filter, please let the water run through the unit for about 5 minutes before collecting any for use.

Changing both your Sediment Filter and Carbon Filter once every SIX MONTHS (depending on use) is recommended. It is recommended to change them sooner if you can see that they are getting clogged/dirty or if your treated water has an abnormally high ppm.

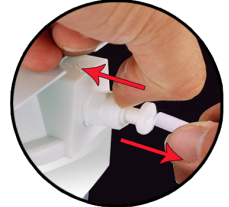


Bracket with Filter Housings with Sediment and Block Carbon Filters.

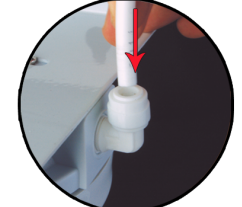


Parts Bag Pieces: Hose Spigot Adapter, Shut Off Valve, Quick Connect Locks.

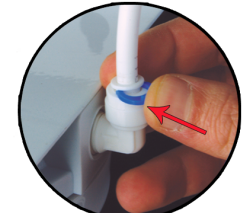
QUICK CONNECT



Push Quick Connect Back and Pull Plug Out



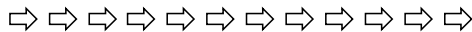
Push Tubing Into Hole



Attach Quick Connect Lock



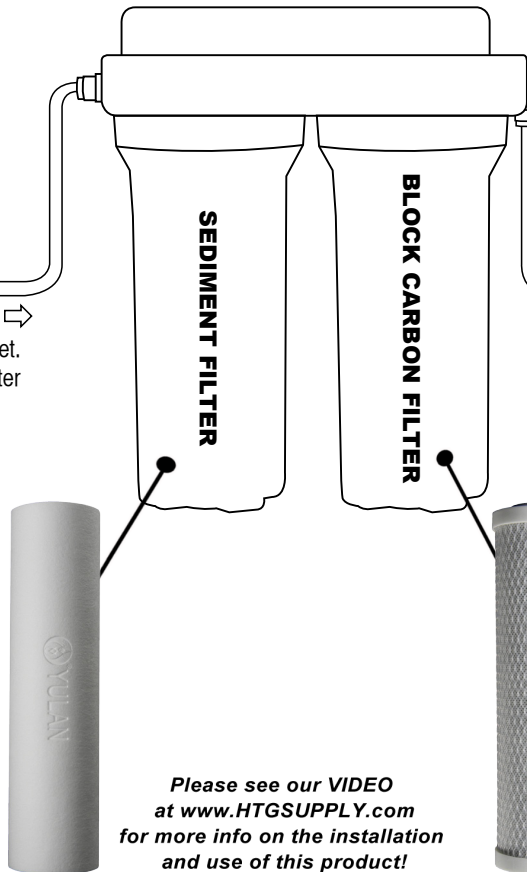
IN FROM FAUCET



Use the hose spigot adapter to connect to a faucet. Run a piece of white tubing from the spigot adapter to the input near the left of the sediment filter.

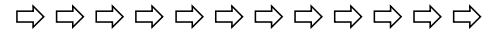


SEDIMENT FILTER is to be installed in the Incoming Side of the System as shown.



Please see our VIDEO at www.HTGSUPPLY.com for more info on the installation and use of this product!

OUT TO RESERVOIR



Run a piece of white tubing from the right side of the block carbon filter out to a large container to be used as a reservoir for the purified water.



CARBON FILTER is to be installed in the outgoing Side of the System as shown.